

CompuSat Control Software

Thank you for upgrading your CompuSat Satellite Earth Station control and automation software.

CompuSat can expand to accommodate new equipment that is added to your earth station, and CompuSat can be customized to meet your unique needs.

Your software can be installed on any computer system that is running one of the following operating systems:

- Microsoft Windows XP
- Microsoft Windows 7

To use your software, all you need to do is install it and follow a few basic instructions, as described in this document.

Backup

Always make a backup of your CompuSat directory (normally c:\compusat) before installing new software. This can be done by simply highlighting the CompuSat directory and pressing *Ctrl+c* to copy the directory and then pressing *Ctrl+v* to paste the backup version. Windows will automatically name the new directory either "Copy of ..." or "... Copy" depending on the OS installed.

Installation

Installation is simple: all that you need to do is run the installer program. Depending on your system, the installer will be called either SETUP_HOST.EXE for network versions of CompuSat, SETUP.EXE for standalone versions of CompuSat or SETUP_LOCAL.EXE for the older serial remote version of CompuSat.

If any data needs to be converted, this conversion will be done on the first launch of the upgraded version of CompuSat. CompuSat will inform you of any conversions taking place when the new version is launched

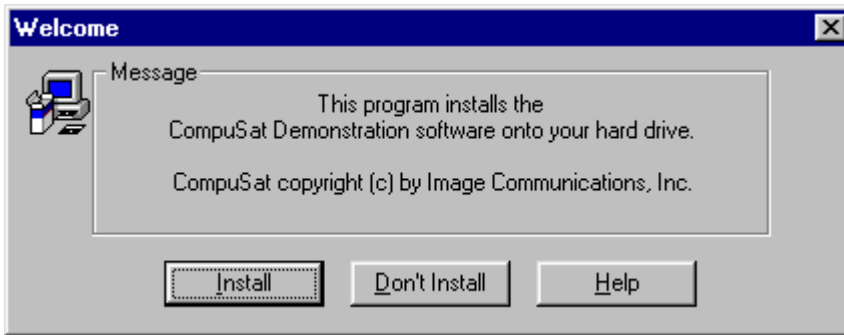
Your software is available on the CompuSat FTP site. Click on the setup program to download or install the new version.

NOTE

The CompuSat software does not install files on your system other than those in the CompuSat folder. To remove the software, you can simply delete the CompuSat folder, which removes all files created during the installation process.

Using the Installer

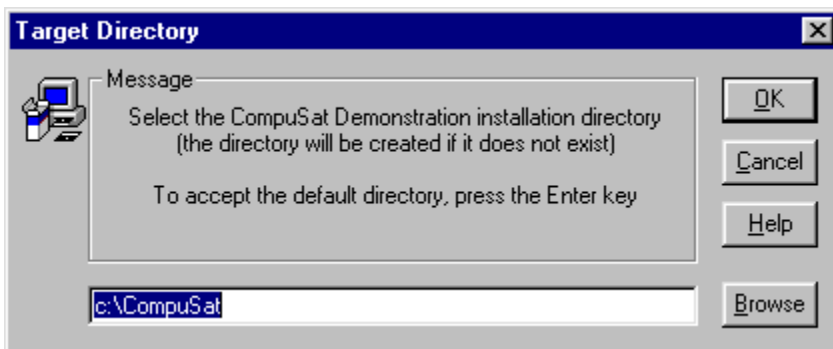
The opening screen of the installer allows you to install the software or cancel the installation, as shown in Figure 1.

Figure 1 The installer opening screen

If you press the *Install* button, you are prompted to choose the directory in which you want the software installed, as shown in Figure 2. The directory `c:\CompuSat.xx` is selected by default.

If you enter the name of a directory that does not yet exist, the installer program will create the directory for you.

All of the CompuSat files are installed into the directory that you select.

Figure 2 The installer directory selection screen

Problems with the new version

Not to worry. You made a backup of the CompuSat directory before starting the upgrade process. Simple rename the current CompuSat directory to something to indicate it has a problem and then rename the backup to the original name. You are now back to where you started before the upgrade.