

Using Operator Login

The operator login features of CompuSat protect your earth station from unauthorized use while providing the operational feedback needed by users of downlink or uplink feeds. These features include:

- Password-protected operator login
- Multiple security levels
- Automatic logoff
- Remote operator name display

When using the operator login features, all CompuSat features are protected, which means that the features can only be accessed by an operator who supplies an authorized password. CompuSat records each login and logoff in the system log file, COMPUSAT.LOG, which provides you with an audit trail.

You can configure CompuSat to automatically log an operator off after a specified amount of time; whenever an operator accesses a protected function, this time-out period is reset, which means that the operator's login is maintained whenever he or she is actively using CompuSat.

This document describes the operator login features of CompuSat in the following sections:

- [About the Operator Database](#)
- [About CompuSat Security](#)
- [Enabling Operator Login](#)
- [Logging In](#)
- [Logging Out](#)
- [The Site Password](#)

About the Operator Database

CompuSat maintains an operator database that stores information for each operator of your system, including the following:

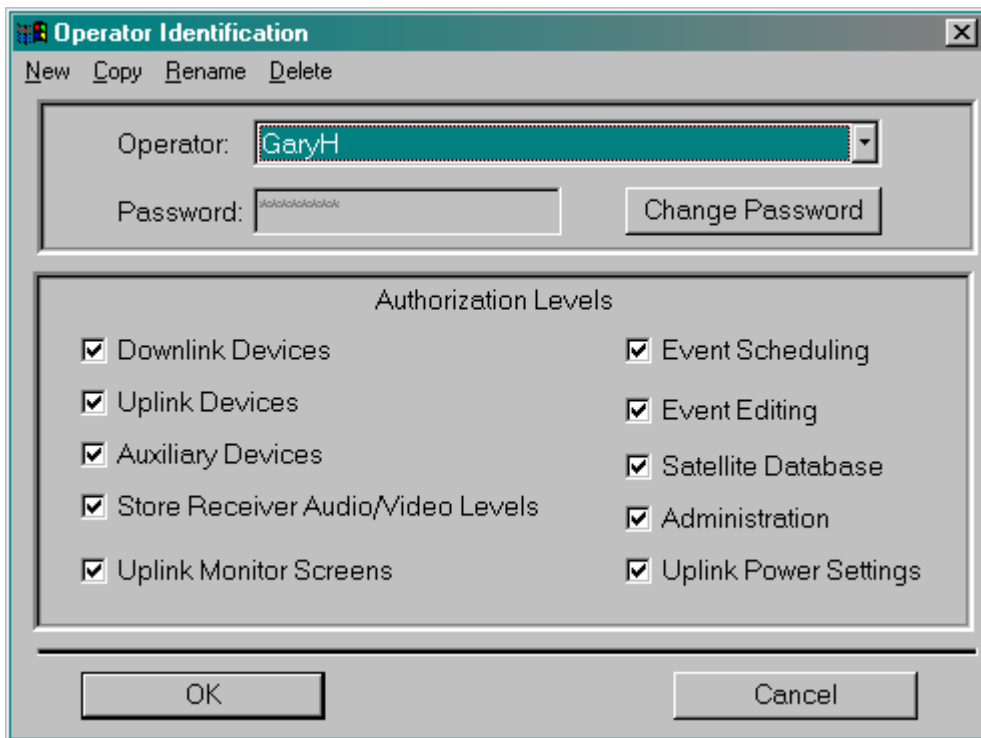
Using Operator Login

- operator name
- operator's password
- operator security access information

Only operators who have administration access can view or modify the operator database. To access this database, select Operator Data from the Database menu.

1. Select *Operator Data* from the Database menu. CompuSat displays the operator database screen, which is shown in [Figure 1](#).

Figure 1 The operator database screen



2. To create a new operator, select the New menu command. CompuSat displays a new operator name dialog box. Enter the name, and then select a password and security access options for the new operator.
3. To view or modify information for an existing operator, select the operator's name from the *Operator* drop-down list.

About CompuSat Security

CompuSat supports independent security access for different functional areas of the system. This enables you to configure each operator's access to different CompuSat features, as shown in the following table..

Security Access Category	Description
Downlink Devices	Operator can use the equipment required to receive a satellite feed, including the antenna positioning and receiver tuning features of CompuSat.
Uplink Devices	Operator can use the equipment required to perform uplinks in addition to using the downlink equipment.
Auxiliary Devices	Operator can use additional equipment such as routers and switchers.
Store Receiver Audio/Video Levels	Operator is authorized to store audio and video levels in the CompuSat database.
Uplink Monitor Screens	Operator is allowed to access the uplink monitor screens.
Event Scheduling	Operator can schedule and edit events.
Satellite Database	Operator can make changes to the satellite database.
Administration	Operator is authorized to make changes to the CompuSat configuration.
Uplink Power Settings	Operator can change the uplink power settings.

Enabling Operator Login

To start using CompuSat's operator login features, follow these steps:

1. You need to add at least one operator with access to the Administration features. To do so, follow these steps:
 - a. Select *Operator Data* from the Database menu. CompuSat displays the operator database screen, which is shown in [Figure 1](#).

Using Operator Login

- b. Select the **New** menu command. CompuSat displays a new operator name dialog box. Enter the name and select a password for the administrative user.
 - c. Select the *Administration* checkbox (and any others) in the *Authorization Levels* section of the operator database screen.
2. Select the system “require operator login” preference as follows:
 - a. Select *Preferences* from the **Configuration** menu. CompuSat displays the Preferences screen.
 - b. Make sure that the checkbox labelled *Require Operator Login* is checked.
 - c. Enter a value in the “number of minutes” field to the right of the checkbox. This specifies the number of minutes of idle time that CompuSat should wait before automatically logging off the operator.

Specify 0 minutes for this value to disable the automatic logoff feature.
3. Press *OK* in the Preferences screen. CompuSat redraws the front panel to reflect any preference changes you have made.

CompuSat adds an operator field to each serial port that is used for remote communications

CompuSat also adds a login field in the status line of the front panel. When an operator is logged in, this field shows the operator’s name. When no operator is logged in, CompuSat flashes *Login* in this field to alert you.

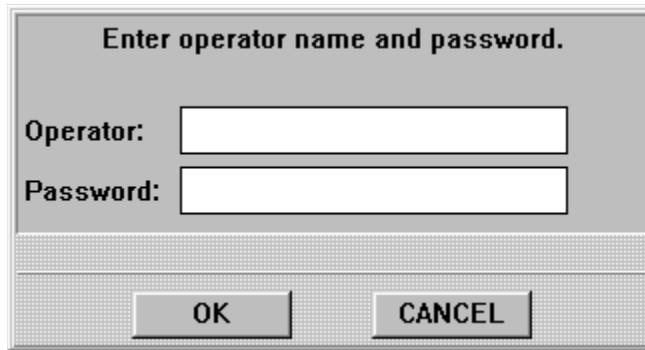
Logging In

CompuSat provides several methods for logging in:

- When no operator is logged in and someone attempts to access a protected function, CompuSat automatically displays the login screen. If the operator logs in successfully and has access to the function, CompuSat allows it.
- When *Login* is flashing in the status area, the operator can click on *Login* to display the login screen.
- The operator can select *Operator Log On/Off* from the *View* menu to display the login screen.

[Figure 2](#) shows the operator login screen.

Figure 2 The operator login screen



Enter operator name and password.

Operator:

Password:

OK CANCEL

NOTE: CompuSat does not distinguish between uppercase and lowercase letters in the name or password entry fields.

Logging Out

CompuSat also provides several methods for a logged-in operator to log out:

- Click on the operator's name display in the status area. CompuSat displays a verification screen before logging the operator out.
- Select *Operator Log On/Off* from the View menu. CompuSat displays a verification dialog box before logging the operator out.
- Remain idle for the amount of time specified in the operator login preferences.

The Site Password

If you are trying to connect to a local CompuSat system from a remote CompuSat system, you need to use the site password as an authorization code.

You can also use the site password to access the CompuSat front panel menus if one of the following occurs:

- Your operator(s) with Administration access forget their passwords.
- Operator login is enabled before you have defined any operators with Administration access.

If you need to use the site password to access the front panel menus, follow these steps:

1. Make sure that no operator is currently logged in.
2. Select a menu. CompuSat displays the operator login screen.

Using Operator Login

3. Enter the site password in the password field. You don't need to enter any name.
4. Click the *OK* button.

NOTE: Your site administrator creates the site password when initially configuring your CompuSat system.
